

Cylindrical Capacitive Proximity Sensors

CR Series (DC 3-wire) INSTRUCTION MANUAL

TCD210257AD

Autonics

Thank you for choosing our Autonics product.

Read and understand the instruction manual and manual thoroughly before using the product.

For your safety, read and follow the below safety considerations before using.

For your safety, read and follow the considerations written in the instruction manual, other manuals and Autonics website.

Keep this instruction manual in a place where you can find easily.



Visit Autonics website (www.autonics.com or QR code) for the latest information. Manuals, CAD files, certifications, software, etc. are available. The dimensions, specifications, certifications, etc. are subject to change without notice for product improvement. Certain models may be discontinued without notice.

Safety Considerations

- Observe all 'Safety Considerations' for safe and proper operation to avoid hazards.
- ▲ symbol indicates caution due to special circumstances in which hazards may occur.

▲ Warning Failure to follow instructions may result in serious injury or death.

01. Fail-safe device must be installed when using the unit with machinery that may cause serious injury or substantial economic loss. (e.g. nuclear power control, medical equipment, ships, vehicles, railways, aircraft, combustion apparatus, safety equipment, crime/disaster prevention devices, etc.)

Failure to follow this instruction may result in personal injury, economic loss or fire.

02. Do not use or store the unit in the place where flammable / explosive / corrosive gas, high humidity, direct sunlight, radiant heat, vibration, impact or salinity may be present.

Failure to follow this instruction may result in explosion or fire.

03. Do not disassemble or modify the unit.

Failure to follow this instruction may result in fire.

04. Do not connect, repair, or inspect the unit while connected to a power source.

Failure to follow this instruction may result in fire.

05. Check 'Connections' before wiring.

Failure to follow this instruction may result in fire.

▲ Caution Failure to follow instructions may result in injury or product damage.

01. Use the unit within the rated specifications.

Failure to follow this instruction may result in fire or product damage.

02. Use a dry cloth to clean the unit, and do not use water or organic solvent.

Failure to follow this instruction may result in fire.

Cautions during Use

- Follow instructions in 'Cautions during Use'. Otherwise, it may cause unexpected accidents.
- 12 - 24 VDC≒ power supply should be insulated and limited voltage/current or Class 2, SELV power supply device.
- Use the product, after 0.8 sec of supplying power.

- Wire as short as possible and keep away from high voltage lines or power lines, to prevent surge and inductive noise.

Do not use near the equipment which generates strong magnetic force or high frequency noise (transceiver, etc.).

In case installing the product near the equipment which generates strong surge (motor, welding machine, etc.), use diode or varistor to remove surge.

- This unit may be used in the following environments.

- Indoors (in the environment condition rated in 'Specifications')
- Altitude max. 2,000 m
- Pollution degree 2
- Installation category II

Cautions for Installation

- Install the unit correctly with the usage environment, location, and the designated specifications.
- The waterproof function may be damaged if the product is subjected to impact from a hard object or bent excessively or repeatedly.
- Do NOT pull the Ø 4 mm cable with a tensile strength of 30 N or over and the Ø 5 mm cable with a tensile strength of 50 N or over. It may result in fire due to the broken wire.
- When extending wire, use AWG 22 cable or over within 200 m.

Ordering Information

This is only for reference, the actual product does not support all combinations. For selecting the specified model, follow the Autonics website.

CR ① - ② ③ ④

① DIA. of sensing side

Number: DIA. of sensing side (unit: mm)

③ Power supply

D: 12 - 24 VDC

② Sensing distance

Number: Sensing distance (unit: mm)

④ Control output

N: NPN Normally open
N2: NPN Normally closed
P: PNP Normally open

Product Components

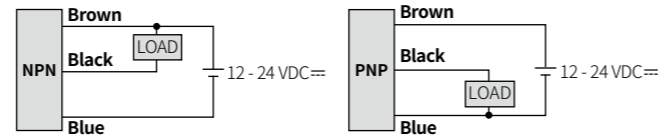
	Product	Instruction manual	Nut	Washer
CR18	× 1	× 1	× 2	-
CR30	× 1	× 1	× 2	× 1

Sold Separately

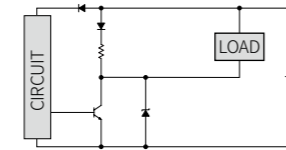
- M12 Connector cable: C□D(H)3-□
- Fixed bracket: P90-R□

Connections

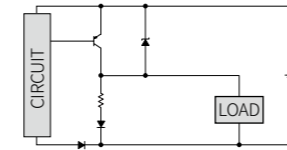
■ Cable type



■ Inner circuit (NPN output)



■ Inner circuit (PNP output)



Operation Timing Chart

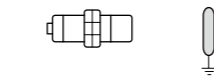
	Normally open	Normally closed
Sensing target	Presence: High pulse, Nothing: Low	Presence: High pulse, Nothing: Low
Load	Operation: High pulse, Return: Low	Operation: High pulse, Return: Low
Output voltage	NPN output: H/L pulses, PNP output: H/L pulses	H/L pulses
Operation indicator (red)	ON/OFF pulses	ON/OFF pulses

Grounding

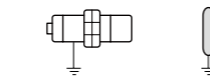
The sensing distance is varied by grounding status of the capacity proximity sensor or the target. Check the material when installing the sensor and selecting the target.

- Use the sensor with the product or sensing target grounded.
- If it is not grounded, the sensing distance may be shortened due to small induced electric charge.
- If the sensor is installed with a bracket, ground the sensor connection to the bracket.

■ CR18-8D□



■ CR30-15D□



Specifications

Installation	Non-flush type	
Model	CR18-8D□	CR30-15D□
DIA. of sensing side	Ø 18 mm	Ø 30 mm
Sensing distance⁰¹⁾	8 mm	15 mm
Setting distance	0 to 5.6 mm	0 to 10.5 mm
Hysteresis	≤ 20 % of sensing distance	
Standard sensing target: iron	50 × 50 × 1 mm	
Response frequency⁰²⁾	50 Hz	
Affection by temperature	≤ ± 20 % for sensing distance at ambient temperature 20 °C	
Indicator	Operation indicator (red)	
Certification	ERC	ERC
Unit weight (package)	≈ 76 g (≈ 88 g)	≈ 206 g (≈ 243 g)

01) Based on grounding status of the standard target.

02) The response frequency is the average value. The standard sensing target is used and the width is set as 2 times of the standard sensing target, 1/2 of the sensing distance for the distance.

Power supply	12 - 24 VDC≒ (ripple P-P: ≤ 10 %), operating voltage: 10 - 30 VDC≒
Current consumption	≤ 15 mA
Control output	≤ 200 mA
Residual voltage	≤ 1.5 V
Protection circuit	Surge protection circuit, reverse polarity protection
Insulation resistance	≥ 50 MΩ (500 VDC≒ megger)
Dielectric strength	Between the charging part and the case : 1,500 VAC~ 50 / 60Hz for 1 min
Vibration	1 mm double amplitude at frequency 10 to 55 Hz in each X, Y, Z direction for 2 hours
Shock	500 m/s ² (≈ 50 G) in each X, Y, Z direction for 3 times
Ambient temperature	-25 to 70 °C, storage: -30 to 80 °C (no freezing or condensation)
Ambient humidity	35 to 95 %RH, storage: 35 to 95 %RH (no freezing or condensation)
Protection structure	DIA. of sensing side Ø 18 mm: IP66 (IEC standard) / DIA. of sensing side Ø 30 mm: IP65 (IEC standard)
Connection	Cable type
Cable spec.	DIA. of sensing side Ø 18 mm: Ø 4 mm, 3-wire, 2 m DIA. of sensing side Ø 30 mm: Ø 5 mm, 3-wire, 2 m
Wire spec.	AWG 22 (0.08 mm, 60-core), insulator DIA.: Ø 1.25 mm
Material	Standard type cable (black): polyvinyl chloride (PVC)
DIA. of sensing side Ø 18 mm	Case / Nut: PA6
DIA. of sensing side Ø 30 mm	Case / Nut: nickel-plated brass, washer: nickel-plated iron, sensing side: PBT

Sensitivity Adjustment

Please turn potentention VR to set sensitivity as below procedure.

- When there is distance fluctuation between proximity sensor and the target, please adjust 2 at the farthest distance from this unit.
- Turning potentention VR toward clockwise, it will be max., or turning toward counter clockwise, it will be min. The number of adjustment should be 15 ± 3 revolution and if it is turned to the right or left excessively, it will not stop, but it idles without breakdown.
- () is for Normally closed type.

Procedure	Potentention VR	Description
1	Stop at ON (OFF) position	Without a sensing object, turn the potentention VR to the right and stop at the proximity sensor is ON (OFF).
2	Stop at OFF (ON) position	Put the object in right sensing position, turn the potentention VR to the left and stop at the proximity sensor is OFF (ON).
3	OFF (ON) position, ON (OFF) position	It is stable when it is over 1.5 times If the difference of the number of potentention VR rotation between the ON (OFF) point and the OFF (ON) point is more than 1.5 turns, the sensing operation will be stable.
4	Adjustment completed OFF (ON) position, ON (OFF) position	If it is set in sensitivity adjustment position of potentention VR at center between 1 and 2, sensitivity setting will be completed.

Cut-out Dimensions

- Unit: mm, Refer to the dimension in the product manual or on the Autonics website.

	Ø 18 mm	Ø 30 mm
Mounting hole (H)	Ø 18.5 ^{+0.5} ₀	Ø 30.5 ^{+0.5} ₀
TAP	M18×1	M30×1.5

	Ø 18 mm	Ø 30 mm
Ø A	26.5	42
B	24	35

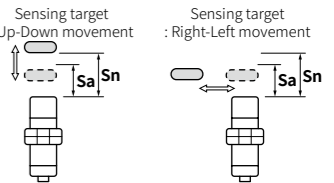
Setting Distance Formula

Detecting distance can be changed by the shape, size or material of the target.

For stable sensing, install the unit within the 70% of sensing distance.

Setting distance (Sa)

= Sensing distance (Sn) × 70%

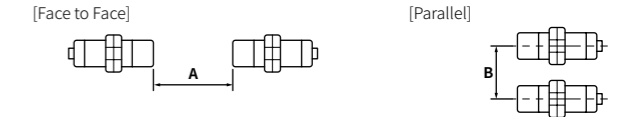


Mutual-interference & Influence by Surrounding Metals

■ Mutual-interference

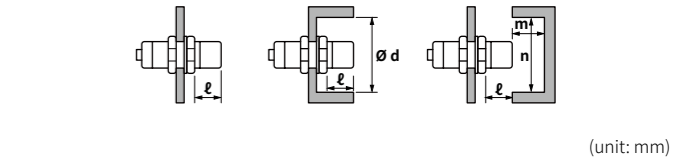
When plural proximity sensors are mounted in a close row, malfunction of sensor may be caused due to mutual interference.

Therefore, be sure to provide a minimum distance between the two sensors, as below table.



■ Influence by surrounding metals

When sensors are mounted on metallic panel, it must be prevented sensors from being affected by any metallic object except target for preventing malfunction of long sensing distance or return error. Therefore, be sure to provide a minimum distance as below chart.

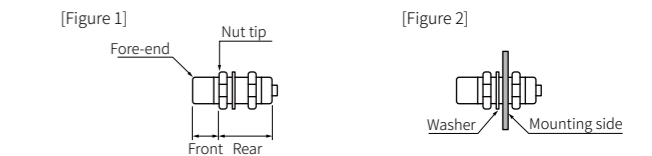


	Sensing side	Ø 18 mm	Ø 30 mm
Item			
A		48	90
B		54	90
l		20	10
Ø d		54	90
m		24	45
n		54	90

Tightening Torque

Use the provided washer to tighten the nuts.

The tightening torque of the nut varies with the distance from the fore-end. [Figure 1] If the nut tip is located at the front of the product, apply the front tightening torque. the allowable tightening torque table is for inserting the washer as [Figure 2].



	Sensing side	Ø 18 mm	Ø 30 mm
Strength			
Front size		-	12 mm
Front torque		0.39 N m	49 N m
Rear torque		0.39 N m	78.4 N m